

**Darwin Initiative/Darwin Plus Projects**  
**Half Year Report**  
 (due 31<sup>st</sup> October 2020)

|   |  |
|---|--|
| <b>Project reference</b>                  | 25-022   |
| <b>Project title</b>                      | Restoring Coastal Fisheries through Sustainable Development in Indonesia.  |
| <b>Country(ies)/territory(ies)</b>        | Indonesia  |
| <b>Lead organisation</b>                  | Yayasan Planet Indonesia   |
| <b>Partner(s)</b>                         | Oceanwise Australia  |
| <b>Project leader</b>                     | <i>Dr Ben Fitzpatrick</i>  |
| <b>Report date and number (e.g. HYR3)</b> | HYR2   |
| <b>Project website/blog/social media</b>  | <a href="http://www.planetindonesia.org/">http://www.planetindonesia.org/</a> <a href="http://www.oceanwise.com.au">www.oceanwise.com.au</a> |

**1. Outline progress over the last 6 months (April – Sept) against the agreed project implementation timetable (if your project has started less than 6 months ago, please report on the period since start up to end September).**

Our project focuses on creating nature-based solutions to catalyse sustainable development in coastal communities in West Kalimantan, Indonesia. We create conservation cooperatives with communities which are bi-lateral partnerships to both promote fair and equitable development in tandem with conservation. This project utilizes temporary mangrove reserves to restore coastal fisheries through providing community-based services. The main goal of our project is to improve community-led mangrove forest management in West Kalimantan, through integrating community-based services to reduce socio-economic inequalities.

To reduce socio-economic inequalities in the short term, this project intends to increase fishery and crab harvest rates for fishers; enroll 600 women and youth in the literacy program with >60% graduation rate; and, provide our healthcare program (family planning and women's hygiene/sanitation program) to 300 women. 40 individuals (10 per team over 4 teams) of the forest and marine patrol unit and fisheries observers trained by Planet Indonesia will participate in aspects of monitoring, patrolling, conducting fisheries surveys and environmental impact research and participate in mangrove reforestation activities preparing them for longer term responsibilities.

**Output 1: Mangrove Forests (15000 ha) protected under temporary mangrove reserves**

We have expanded our approach to new villages and are currently covering over half of the targeted landscape with ~12,000 hectares of mangroves under community supported management. During the first half year a total of 2,197.35 hectares are currently protected through a temporary closure lasting from July – November 2019. During this period we also conducted SMART patrol recruitment, and have 4 current units that are working throughout the 15,000 ha landscape, total membership grew from 19 to 29 individuals. During this period, the village of Dabong and Kuala Karang were officially on boarded to the program. SMART patrols have yet to launch but CCs have been created in each village.

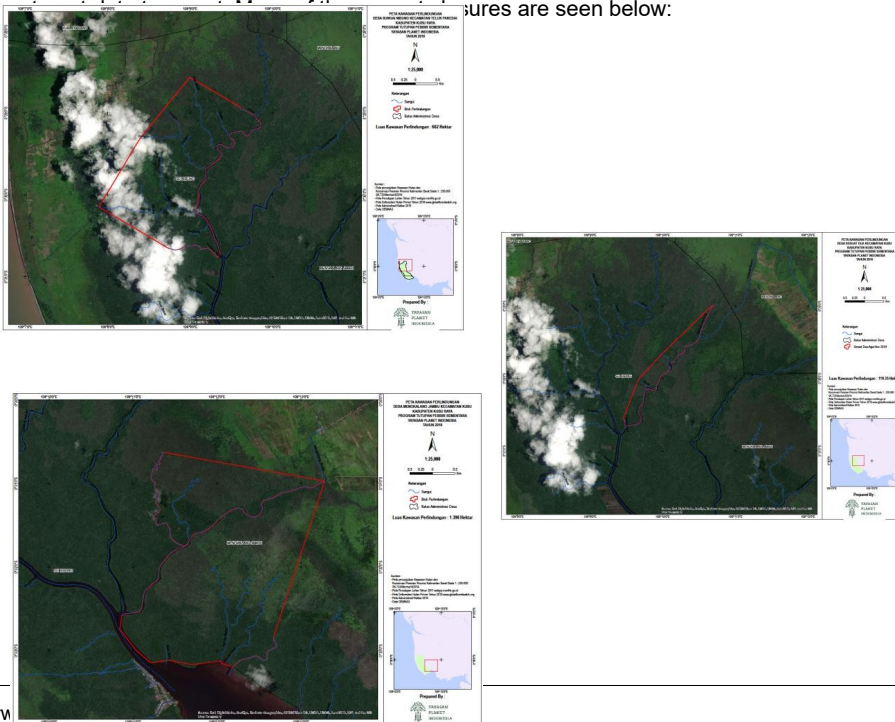
**Table 1: Active patrol team and membership in the project area**

| Village Name     | Number of Patrol Members |
|------------------|--------------------------|
| Sungai Nibung    | 7                        |
| Seruat Dua       | 8                        |
| Mengkalang       | 7                        |
| Mengkalang Jambu | 8                        |
| <b>Total</b>     | <b>29 individuals</b>    |

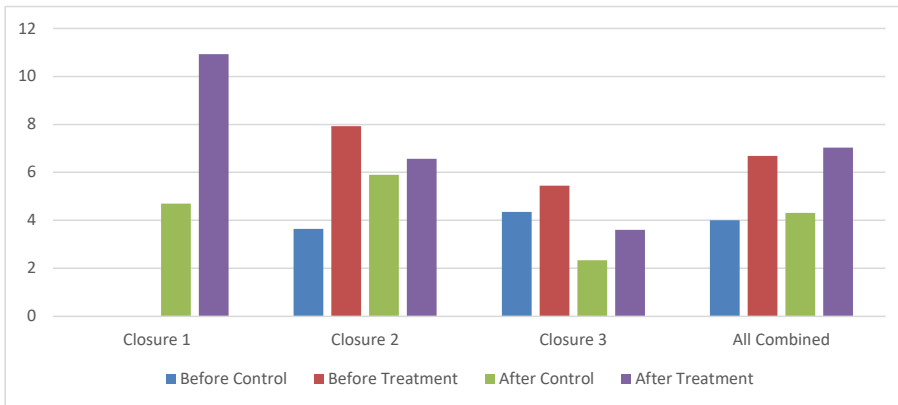
During this year we also have sought to improve the effectiveness of our patrols by expanding the use of the Spatial, Monitoring and Reporting Tool (SMART). Yayasan Planet Indonesia has been using the SMART system and is a certified trainer since 2016. However, we had previously focused on its use in terrestrial areas. During this year our terrestrial team has been working with our coastal and marine team to expand the use of SMART into mangrove areas to improve the effectiveness of our patrol teams.

**Output 2: Increased harvest size by fishermen enrolled in program in TMRs zones.**

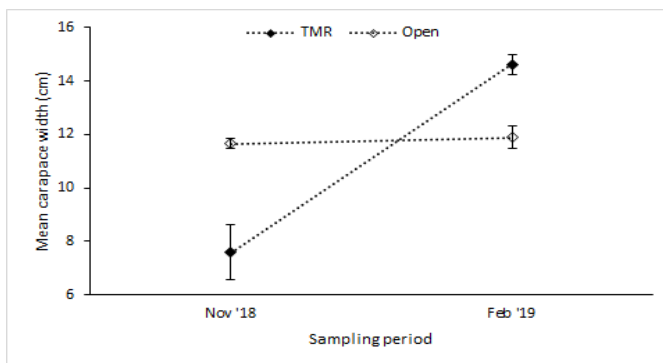
Using our standard monitoring and evaluation strategy which collects data intensively at landing sites within the village for 21 days prior to a closure and 21 days post closure. Landing sites are monitored by a team consisting of one local who has been trained in data collection methods and a Planet Indonesia staff. Data collection starts at sun-up and finishes at sun-down. Data is collected on time the fishermen left, time the fishermen returned, number of crabs caught, weight of crabs, the crab class (Class A, Class B, and Class C) as well as measurements of the 5 largest crabs both width and length. As previously mentioned the current closure will open in early November, therefore we do not have the before-after-control-treatures are seen below:



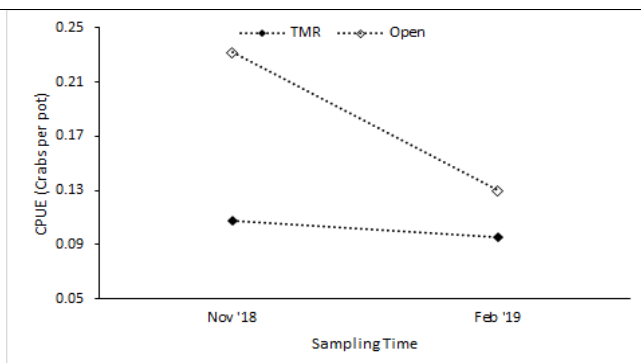
Darw



**Figure 1:** Fisheries dependent data - Shows before – after and control treatment data for the average weight of crabs caught across closures.



**Figure 2:** Fisheries independent data - Mean carapace width (cm) of crabs in TMR and open rivers before (November 2018) and after (February 2019) the third closure. Error bars represent standard error.



**Figure 3:** Fisheries independent data - Catch per unit of effort for crabs in TMR and open rivers before (November 2018) and after (February 2019) the third closure.

**Output 3: Degraded forest patches and shrimp ponds enhanced and restored with mangrove plantings.**

During this period Yayasan Planet Indonesia (YPI) began with mangrove restoration using the locally common *Rhizophora mucronata* species. A nursery of 18,000 seedlings was developed and have been planted on 4 hectares of shrimp aquaculture ponds in the project area. 25 individuals were involved in this and the activities were supported by villagers, patrol members, fishermen, and YPI staff. New plantings were conducted in 2020 in degraded coastal areas. However, due to bad weather many of the seedlings in this area have been washed out. End of the year reports were address this with survival estimates.

**Output 4: Small Micro-enterprises are Establish to economically empower local fishermen while engaging them in the TMR system.**

As we have expanded our SMEs hosted through our Conservation Cooperative approach, to date a total of 628 households have enrolled across 6 cooperatives in the four villages we are currently working with. This surpasses our 3 year Darwin target. At the end of September 2020 total savings are Rupiah or roughly pounds sterling. There are currently 68 households with active loans from CCs.

**Table 2:** Current formed cooperative involved in the program

| No | Cooper name              | Sub-village                    | Village          | Sub-district  | District  |
|----|--------------------------|--------------------------------|------------------|---------------|-----------|
| 1. | Sungai Nibung Sejahtera  | Tanjung Burung & Sungai Jebung | Sungai Nibung    | Teluk Pakedai | Kubu Raya |
| 2. | Tanjung Ruu Sejahtera    | Tanjung Ruu                    | Sungai Nibung    | Teluk Pakedai | Kubu Raya |
| 3. | Mengkalang Jambu Mandiri | -                              | Mengkalang Jambu | Kubu          | Kubu Raya |
| 4. | Harapan bersama          | -                              | Mengkalang       | Kubu          | Kubu Raya |
| 5. | Seruat Dua Maju Bersama  | -                              | Seruat Dua       | Kubu          | Kubu Raya |
| 6. | Kuala Karang bersama     | Kuala Karang                   | Kuala Karang     | Teluk Pakedai | Kubu Raya |

**Output 5: Literacy program continues running to improve capacity and job market access for women and youth.**

During this past year we focused on expanding our literacy program to the new villages we are working in an opening up enrolment for the year long course. However, the national exam was delayed this year due to COVID-19.

**Table 3:** Shows the updated progress on the number of individuals who have enrolled in the literacy and education program over the past 6 months in reference to the first two years.

| Year      | Village          | Male | Female | Total |
|-----------|------------------|------|--------|-------|
| 2017/2018 | Sungai Nibung    | 47   | 83     | 130   |
| 2017/2018 | Tanjung Ruu      | 2    | 1      | 3     |
| 2018/2019 | Sungai Nibung    | 18   | 14     | 32    |
| 2018/2019 | Tanjung Ruu      | 4    |        | 4     |
| 2018/2019 | Mengkalang       | 26   | 41     | 67    |
| 2018/2019 | Mengkalang Jambu | 14   | 29     | 43    |
| 2018/2019 | Seruat Dua       | 11   | 40     | 51    |
| 2019/2020 | Sungai Nibung    | 1    | 2      | 3     |
| 2019/2020 | Tanjung Ruu      | 5    | 17     | 22    |
| 2019/2020 | Mengkalang       | 19   | 4      | 23    |
| 2019/2020 | Mengkalang Jambu | 10   | 22     | 32    |
| 2019/2020 | Seruat Dua       | 7    | 15     | 22    |
| 2019/2020 | Sungai Nibung    | 1    | 6      | 7     |
| 2019/2020 | Tanjung Ruu      | 4    |        | 4     |
|           |                  | 169  | 274    | 443   |

**Output 6: Family Planning and Health Sanitation program established to improve access for women/youth.**

Our Population – Health – Environment program is currently active in the village of Sungai Nibung. In 2020 we expanded this to Seruat II. There is a total of 31 health ambassadors that have been trained and remain active. All are women. On average, they visit 54 households a month reaching 237 individuals. Information on nutrition, family planning, WASH, and other information is provided via posters, games, and booklets. In the past quarter 24 households were given information on contraceptives and provided contraceptives upon request. Health ambassadors have also provided information to household on stunting, waste management, and pre-post natal nutrition.

|   |
|---|
| <p><b>2a. Give details of any notable problems or unexpected developments/lessons learnt that the project has encountered over the last 6 months (for Covid-19 specific delays/problems, please use 2b). Explain what impact these could have on the project and whether the changes will affect the budget and timetable of project activities.</b></p>  |
| <p>The two problems encountered were that:</p> <ol style="list-style-type: none"> <li>1. Spatial targets for reforestation activities were too large and did not fit with the number of seedlings targeted. We have revised these to accurately reflect the work on the ground</li> <li>2. A considerable amount of impact was missed in our community health program and therefore we needed to add additional indicators to fully represent that change happening on the ground based upon the intervention</li> </ol> <p>In light of comments received following our annual review and comments around changed outcomes, we submitted a change request which after a process of internal Darwin Review have been confirmed as accepted on the 20th November 2020. In response the main changes approved by Darwin are:</p> <ol style="list-style-type: none"> <li>1. Our output for the number of hectares of Mangrove reforestation was overestimated in our original proposal. This required a revision to spatial targets to reflect the total number of seedlings planted. Seedling number estimations were accurate and have not changed.</li> <li>2. We have added additional indicators to our community health output. This is because original indicators to not fully capture the breadth of impact, and, therefore, based upon our MTR from Darwin we agree that adding additional indicators allows for better tracking of program results.</li> </ol> |
| <p><b>2b. Please outline any specific issues which your project has encountered as a result of Covid-19. Where you have adapted your project activities in response to the pandemic, please briefly outline how you have done so here. Explain what residual impact there may be on your project and whether the changes will affect the budget and timetable of project activities.</b></p>  |
| <p>There has been very little disruption to the implementation of our program and no change request has been required. We amended the execution of a number of verification methodologies to enable our collective team to continue gathering data. This required the creation of a series of method statements, sampling protocols, supporting materials, workshops, preliminary field collection, data acquisition, management and transfer, feedback and refinement. The four method statements (attached) include:</p> <ol style="list-style-type: none"> <li>1. Shoreline video assessment methodology addressing (Project outcome 1 &amp; 3)</li> <li>2. Spatial areas of interest Questionnaire survey field protocol (Project Outcome 1)</li> <li>3. Mangrove transplant monitoring field protocol (Project Outcome 2 &amp; 3)</li> <li>4. Mud Crab Fishery Independent Monitoring Field Protocol (Project outcome 1 &amp; 3)</li> </ol> <p>These are methodologies deployed during surveys from project commencement so represent both significant knowledge transfer and program continuity.</p>  |
| <p><b>2c. Have any of these issues been discussed with LTS International and if so, have changes been made to the original agreement?</b></p>   |
| <p>Discussed with LTS: Yes 2a changes discussed. 2b Not Applicable.</p>   |
| <p>Formal change request submitted: Yes 2a change requests submitted. 2b Not Applicable.</p>  |
| <p>Received confirmation of change acceptance.<br/>Yes 2a change requests approved. 2b Not Applicable.</p>  |

Commented [EY(1)]: Not attached

**3a. Do you currently expect to have any significant (e.g. more than £5,000) underspend in your budget for this year?**

Yes  No  Estimated underspend: £

**3b. If yes, then you need to consider your project budget needs carefully.** Please remember that any funds agreed for this financial year are only available to the project in this financial year.

**If you anticipate a significant underspend because of justifiable changes within the project, please submit a rebudget Change Request as soon as possible. There is no guarantee that Defra will agree a rebudget so please ensure you have enough time to make appropriate changes if necessary. Please DO NOT send these in the same email as your report.**

**4. Are there any other issues you wish to raise relating to the project or to Darwin's management, monitoring, or financial procedures?**

No there are none at this stage thankyou.

If you were asked to provide a response to this year's annual report review with your next half year report, please attach your response to this document.

Please note: Any **planned** modifications to your project schedule/workplan can be discussed in this report but **should also** be raised with LTS International through a Change Request. **Please DO NOT send these in the same email.**

Please send your **completed report by email** to [Darwin-Projects@ltsi.co.uk](mailto:Darwin-Projects@ltsi.co.uk). The report should be between 2-3 pages maximum. **Please state your project reference number in the header of your email message e.g. Subject: 25-001 Darwin Half Year Report**